

SHAMROCK V (1930)

Instructions:

Follow these instructions carefully and step by step. The rigging lines of the boat could tangle easily so do not undo the lines until instructed.

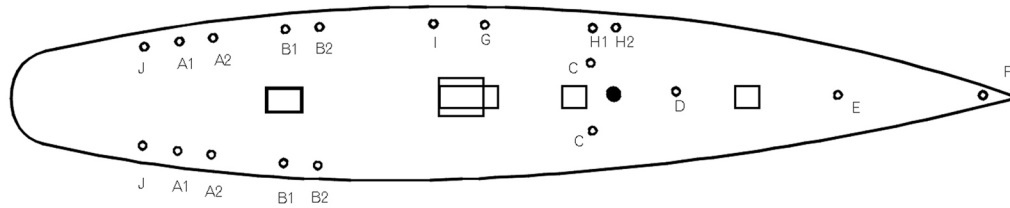
1. Unwrap the hull and stand. Place the hull into the stand with the hull facing forward to your right. Keep the starboard side of the boat facing you in order to follow the instructions and to compare with the diagrams.
 - 1a. Study the open eyes of A1, A2 and B1, B2 and eyes C, D, E, F on the deck. They each have a fixed position that corresponds to different rigging lines and sail sheets of the boat. See diagram (1)
2. Unwrap the packing of the mast. You will find a brass hole near the bottom of the mast. The brass hole must face towards the stern of the yacht. Insert the mast into the mast step in the center of the deck.
 - 2a. On the mast, you will find two sets of running backstay lines w/blocks. Unfold the upper running backstay first and attach the lines to the brass eyes A1, A2 on the rear of the deck. See diagram (2)
 - 2b. Unfold the next lower group of running backstays with blocks on the mast. Attach the lines to the brass eyes B1, B2 on the deck. See diagram (2)
 - 2c. Attach the two shroud lines from the middle spreaders on the mast to eyes C. See diagram (2)
 - 2d. Attach the upper shroud lines from the top spreaders to the brass eye D on the deck. See diagram (2)
3. Unpack all of the sails. You may want to press the sails with an iron to get out any wrinkles. Each sail is numbered for convenience of set up. You should have sails 1, 2, 3 & 4. Do not remove the numbers until the set up is complete. Compare each with the diagram, which shows the exact location of each sail. See diagram (3)
 - 3a. Hook the top of the main sail no.1 to the uppermost eye on the mast. Place the brass pin at the end of the boom into the hole near the bottom of the mast. See diagram (3)
 - 3b. Fix the hooks at the other end of the boom to eyes J & J1 on the rear deck. See diagram (3)

SHAMROCK V (1930)

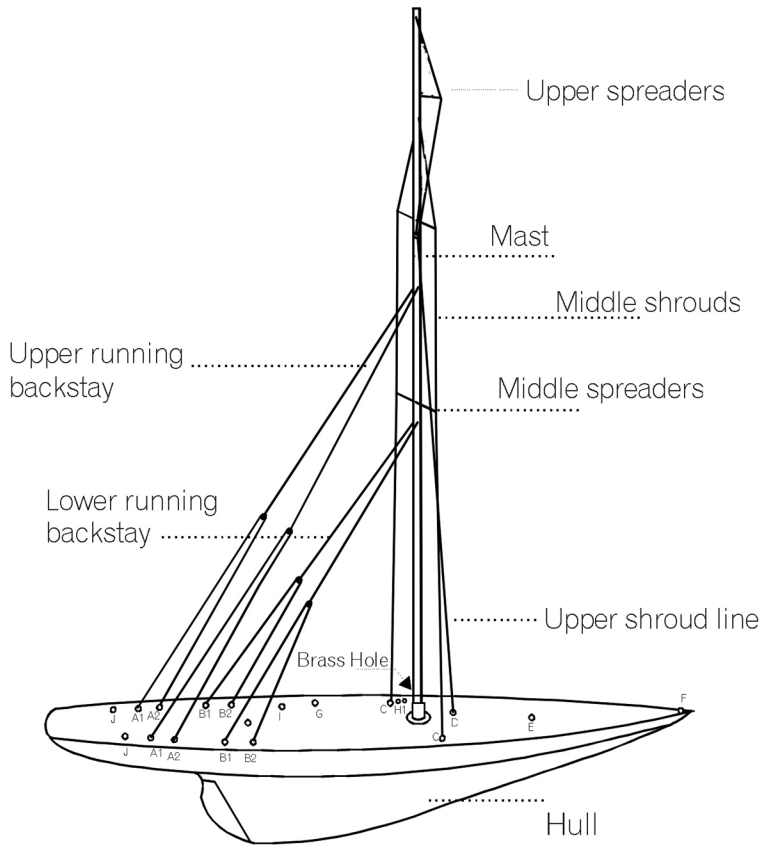
- 3c. Find sail no. 2. Hook the top of the sail to the appropriate eye at the front of the mast. The leading edge of sail no. 2 should attach to eye E. The sheet of the sail should attach to eye G on the deck. See diagram (3)
- 3d. Find sail no. 3 and hook the top to the appropriate eye at the upper front of the mast. The leading edge of sail no. 3 should attach to eye F. The sheet of sail no. 3 should attach to eye H1 & H2 on the deck. See diagram (3).
- 4. Find sail no. 4. Hook the top to the appropriate eye on the upper front of the mast. The leading edge of sail no. 4 should attach to eye F at the front of the deck. The sheet of sail no. 4 should attach to eye I on the deck. See diagram (3).

Your Sail Classics yacht should now be complete. Enjoy!

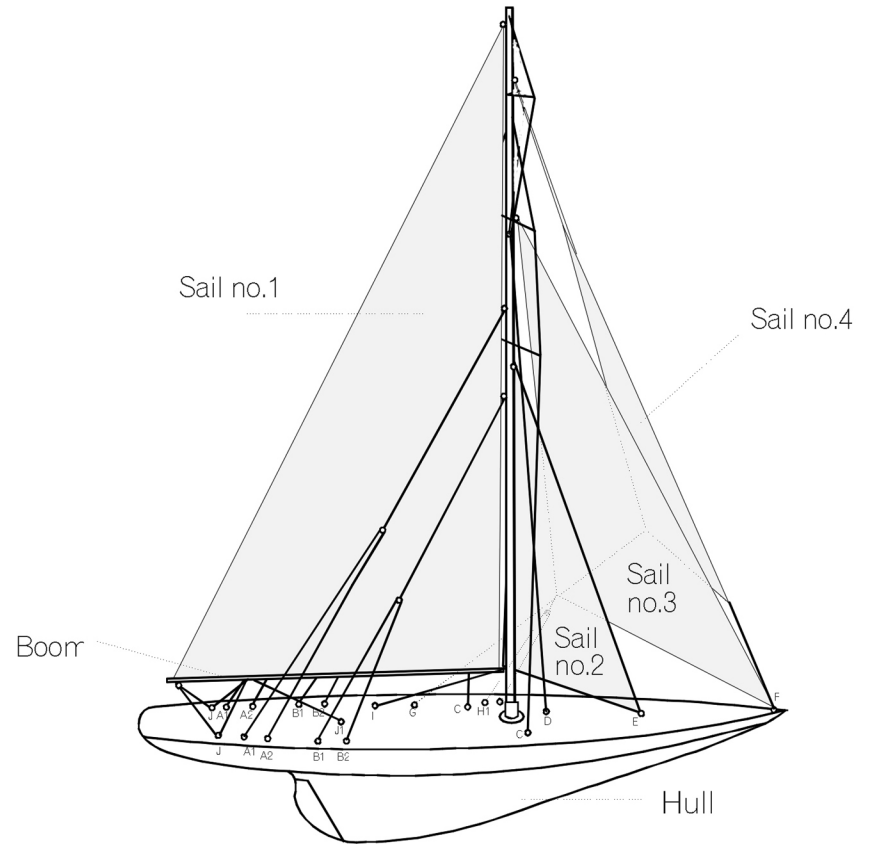
Shamrock V (1930)



(1)



(2)



(3)