

Endeavour (1934)

Instructions:

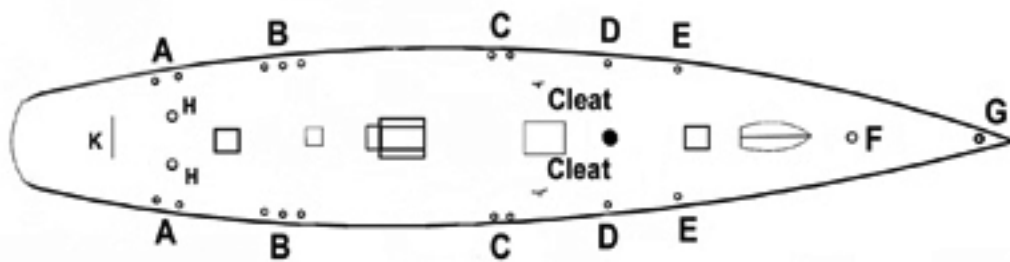
Follow these instructions carefully and step by step. The rigging lines of the boat could tangle easily so do not undo the lines until instructed.

1. Unwrap the hull and stand. Place the hull into the stand with the hull facing forward to your right. Keep the starboard side of the boat facing you in order to follow the instructions and to compare with the diagrams.
- 1a. Study the open eyes of A, B, C, D, E, F, G & H, also traveler K, and two cleats on the deck. They each have a fixed position that corresponds to different rigging lines and sail sheets of the boat. See diagram (1)
2. Unwrap the packing of the mast. You will find a brass hole near the bottom of the mast. The brass hole must face towards the stern of the yacht. Insert the mast into the mast step in the center of the deck.
3. On the mast, you will find two sets of running backstay lines w/blocks and one set of forestay lines. Unfold the upper running backstay first and attach the lines to the brass eyes A, Port & Starboard sides, on the rear of the deck. See diagram (2)
- 2b. Unfold the next lower group of running backstays with blocks on the mast. Attach the lines to the brass eyes B, P & S sides on the deck. Then lead the forestay lines to eyes E, P & S sides. See diagram (2).
- 2c. There are 3 spreaders with lines on the mast. Pls. unfold the lines, and then hook the lines down to eyes D, P & S sides. See diagram (1) & (2).
3. Unpack all of the sails. You may want to press the sails with an iron to get out any wrinkles. Each sail is numbered for convenience of set up. You should have sails 1, 2 & 3. Do not remove the numbers until the set up is complete. Compare each with the diagram, which shows the exact location of each sail. See diagram (3)
- 3a. Hook the top of the main sail no.1 to the uppermost eye on the mast. Place the brass pin at the end of the boom into the hole near the bottom of the mast. See diagram (3)
- 3b. Fix the hook with double block at the other end of the boom to traveler K. Hook the other two single blocks to eyes H, P & S sides, leading the lines forward, then wrap the lines to two Cleats near center deck, P & S side. See diagram (3)
- 3c. Find double lines tied to the boom about 3/4 way aft. The lines go on each side of the main sail. There should be a moving-free hook on each line. Find the hook, and then hook it up to an eye near the lowest spreader on the mast. Lead the ends of the line, one has a block w/hook, another line is only a hook, to eyes C on middle deck, P & S side. See diagram (3). Finish the sail by spreading the brass rings apart and closing them around the mast.
4. Find sail no. 2. Hook the top of the sail to the appropriate eye at the front of the mast. The leading edge of sail no. 2 should attach to eye F. The sheet of the sail should attach to eye B, port-side on the deck. See diagram (3)
5. Find sail no. 3 and hook the top to the appropriate eye at the upper front of the mast. The leading edge of sail no. 3 should attach to eye G. The sheet of sail no. 3 should attach to eye C, port-sides, on the deck. See diagram (3).

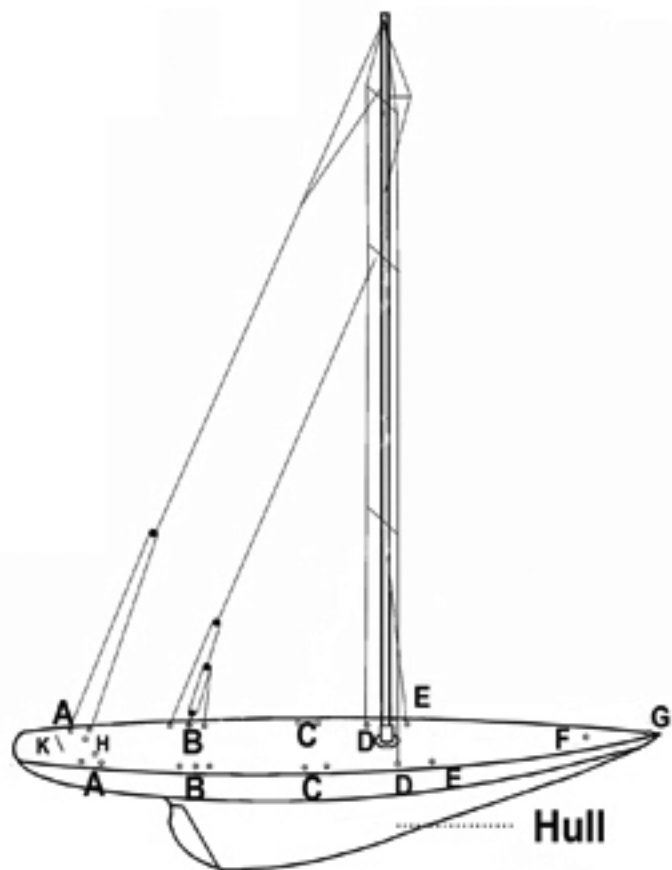
Your Sail Classics yacht should now be complete. Enjoy!

Sail Classics, Inc.
P.O.Box 747 Lakeway, WA 98349
Phone: 253-884-2267 Fax: 253-884-7858

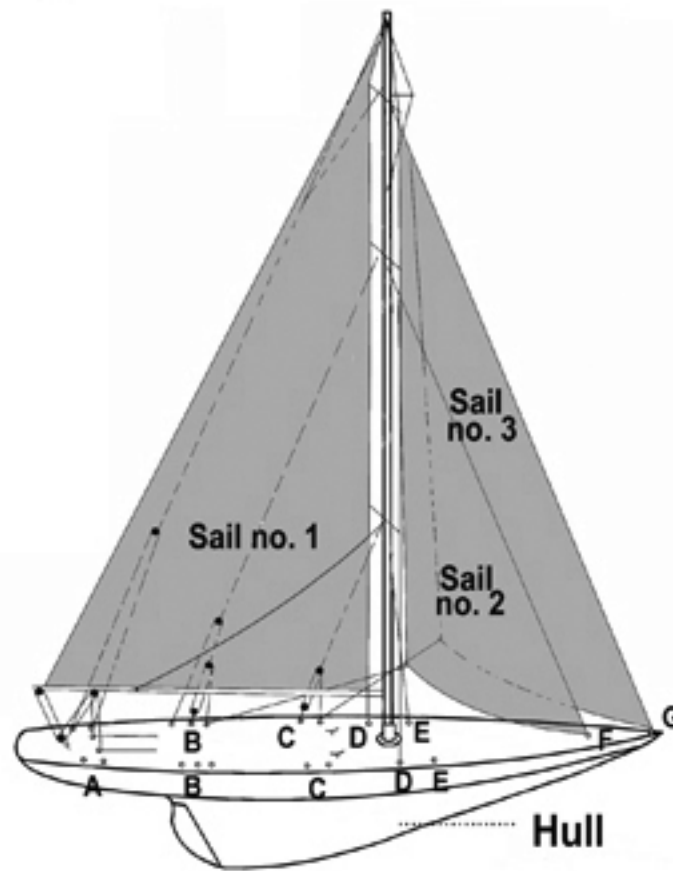
Endeavour (1934)



(1)



(2)



(3)