

AMERICA (1851)

Instructions:

Follow these instructions carefully and step by step. The rigging lines of the boat could tangle easily so do not undo the lines until instructed.

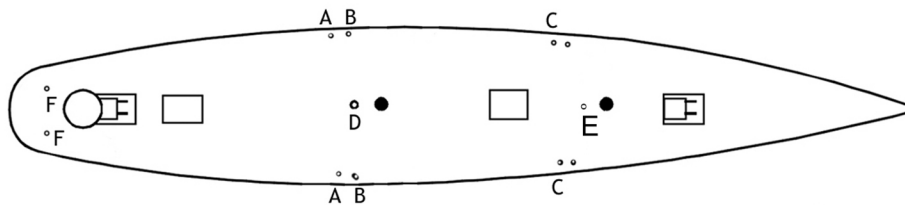
1. Unwrap the hull and stand. Place the hull into the stand with the hull facing forward to your right. Keep the starboard side of the boat facing you in order to follow the instructions and to compare with the diagrams.
 - 1a. Study the open eyes A, eyes B, C, D, E, and F on the deck and capping rails. They each have a fixed position that corresponds to different rigging lines and sail sheets of the boat. See diagram (1)
2. Unwrap the packing of the masts. Start with the main mast. You will find brass J1 on the upper part of the main mast. The brass eye J1 must face toward the stern of the yacht. Insert the mast into the mast step 1 on the deck. See diagram (2)
 - 2a. On the Main mast, you will find two sets of running shroud lines w/blocks. Unfold the lines one by one so as not to tangle them. Attach the lines to the brass eyes A & B on the aft end of the capping rail. See diagram (2)
 - 2b. Next follow the same procedures as in 2 and 2a, for the foremast. Insert the foremast into the mast step 2 on the deck. Keep brass J2 towards the stern of the hull. See diagram (2)
 - 2c. Unfold the running shroud lines on the foremast and attach them to brass eyes C on the capping rail. See diagram (2).
 - 2d. Please find linking lines with one hook on the top of the main mast, attach the hook to brass eye L2 on the topmost of foremast. See diagram (2).
3. Unpack all of the sails. You may want to press the sails with an iron to get out any wrinkles. Each sail is numbered for convenience of set up. You should have sails 1, 2, 3, & 4. Do not remove the numbers until the set up is complete. Compare the numbers on the diagram, which shows the exact location of each sail. Study this carefully to know the exact location of each sail before the next step. See diagram (3).
 - 3a. Start with sail no. 1. Clip the jaw on the end of the gaff pole 1 up to brass eye J1 which is used for holding the gaff pole1. See diagram (3)

AMERICA (1851)

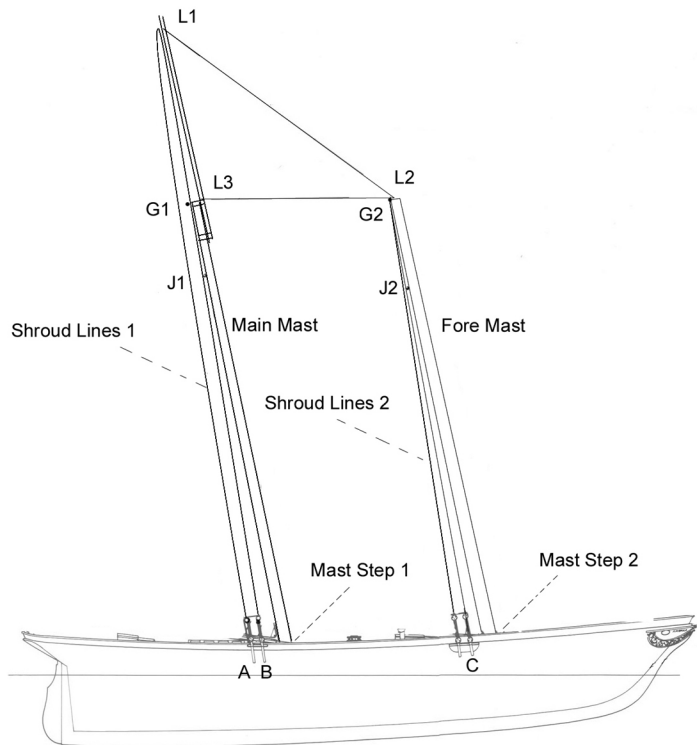
- 3b. Carefully remove the plastic tubes from the hooks of the peak halyard lines on gaff 1. Study peak halyard 1, find a hook with block on it, attach the hook to eye G1 on the upper part of the main mast. Clip the jaw on the end of the boom to the bottom part of the main mast. See diagram (3)
- 3c. Secure the boom in place by attaching the brass hooks and block (on the bottom of the boom) to the brass eyes F on the aft end of the deck. See diagram (3)
- 3d. Please find lazy lines on each side of the main sail. Hook the lines to G1. See diagram (3)
4. Insert the bowsprit into its wooden bracket on the bow and attach the hook from the bow to brass eye I on the top of the bowsprit. See diagram (3)
5. Find sail no. 2. Clip the jaw on the end of gaff pole 2 up to brass eye J2 on the foremast. See diagram (3).
- 5a. Carefully remove the plastic tubes from the hooks of the peak halyard lines on gaff 2. Attach the gaff 2 to the brass eye G2 on the upper part of the foremast. The sheet of sail no. 2 runs to one of the eyes A. See diagram (3).
6. Find the Gaff Tops'l sail no. 3. Hook the top of the sail to the eye on the uppermost eye on the main mast. Hook the other angle of sail no. 3 to the end of gaff 1. The bottom line of sail no. 3 runs down to the brass eye D on the deck. See diagram (3).
7. Find sail no. 4 and attach the top hook on the sail to an eye on the upper front of the foremast. See diagram (3). The leading edge of the sail leads to eye H on the bowsprit. The sheet runs to eyes E on the deck. See diagram (3).

Your America yacht should now be complete. Enjoy!

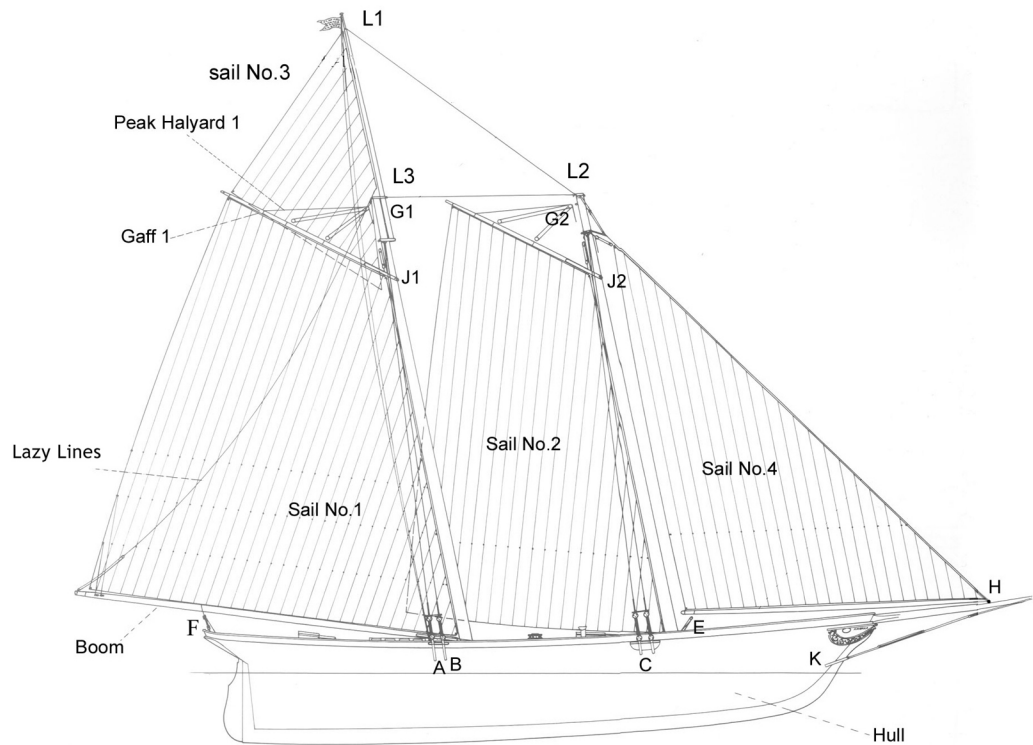
America(1851)



(1)



(2)



(3)